



Analog IC /Discrete total solution provider

## 17 MHz Rail-to-Rail Input-Output Operational Amplifiers

### DESCRIPTION

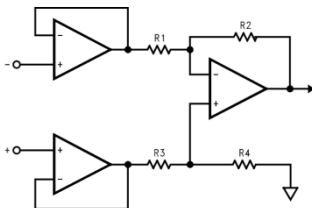
UTC L6142 (Dual amps) and L6144 (Quad amps) operate from  $V_{cc} = 2.7V$  to  $V_{cc} = 24V$ . The available voltage swing of input and output cover rail-to-rail supply range. They feature high slew rate and gain-bandwidth-product while keeping minimum standby consumption. UTC L6142 and L6144 are suitable in high-gain circuit, battery-powered devices, and portable instrument.

### FEATURES

- ◆  $V_{cc}$  range: 2.7V~24V
- ◆ Quiescent current per amp: 450 $\mu A$  (Typ. L6142)  
650 $\mu A$  (Typ. L6144)
- ◆ Slew rate: 5V/ $\mu s$  (small input signal)  
30V/ $\mu s$  (large input signal)
- ◆ Rail-to-rail input & output

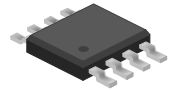
### Applications

- ◆ Battery powered instrument
- ◆ Depth sounder / fish finder
- ◆ Barcode scanner
- ◆ Wireless communication
- ◆ Rail-to-rail input & output instrument amps



3-op-amp instrumentation amplifier

L6142



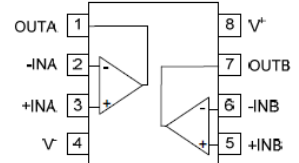
SOP-8

L6144

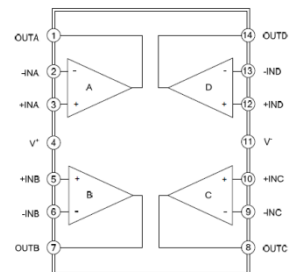


SOP-14

L6142



L6144





Analog IC /Discrete total solution provider

## 17 MHz Rail-to-Rail Input-Output Operational Amplifiers

### Applications

Battery-powered device



Depth sounder / fish finder



Bar code scanner



Wireless communication

